



**Midwest Regional**  
CHILDREN'S ADVOCACY  
CENTER

- HOME
- DASHBOARD
- MY COURSES
- NEED HELP?
- EXIT



My Courses



Course Catalog



Dashboard



**Click on my courses to access courses you are enrolled in**

Browser address bar: [https://mrcac.paradisolms.net/course/explore\\_courses.php?my\\_c](https://mrcac.paradisolms.net/course/explore_courses.php?my_c) My Courses


File Edit View Favorites Tools Help

Left sidebar menu: HOME, DASHBOARD, COURSES, PEOPLE, REPORTS, HELPDESK, EXIT

Top right: Admin Edit mode (toggle) User profile icon


### My Courses

Search Course



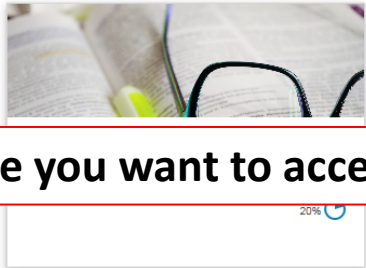
Child Interviewing: The Ten Step Forensic...

1%




Click on the course you want to access

0%



20%



NATIONAL CHILDREN'S ALLIANCE®

th with Problematic Sexual Behaviors

course will provide an overview of youth with  
ematic sexual behaviors, discuss t...

**Tip: For optimal viewing, we recommend using Google Chrome to access our courses.**

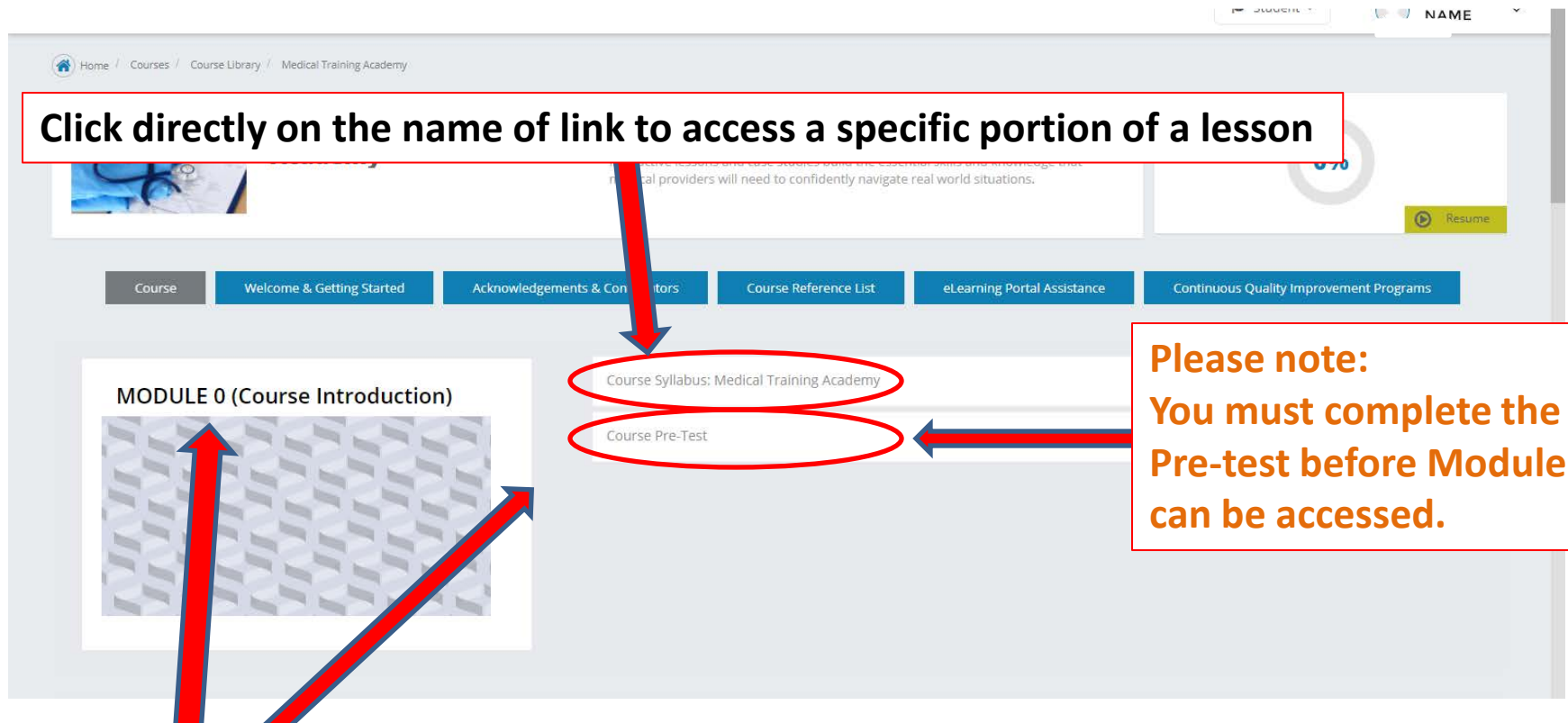
**This is your course progress indicator. Please note it takes the system at least 5 minutes to update status.**

**Tip: Refreshing your browser and clearing your internet cache and/or history will help resolve any times where the course is “stuck” or not recording progress.**

The screenshot shows the 'Medical Training Academy' course page. At the top right, there is a user profile section with a 'Student' dropdown and a 'NAME' label. Below this, a circular progress indicator shows '0%' completion, which is circled in red with a blue arrow pointing to it from the text above. A horizontal navigation bar contains several tabs: 'Course', 'Welcome & Getting Started', 'Acknowledgements & Contributors', 'Course Reference List', 'eLearning Portal Assistance', and 'Continuous Quality Improvement Programs'. This bar is outlined in red with a blue arrow pointing to it from the text below. The main content area on the left features a 'MODULE 0 (Course Introduction)' section with a placeholder image. On the right, there are two expandable sections: 'Course Syllabus: Medical Training Academy' and 'Course Pre-Test', each with a toggle icon.

**These tabs contain general information about the course and other resources.**

**Click directly on the name of link to access a specific portion of a lesson**

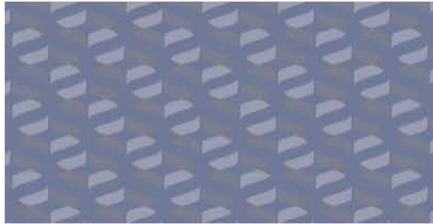


**Please note:  
You must complete the  
Pre-test before Module 1  
can be accessed.**

**Lessons are broken down into modules.  
Please see which lessons are in each module here.**

**Click on this arrow to see information about each lesson.**

## MODULE 1 (LESSONS 1-8)



### Module 1: Optional Reading

#### Lesson 1a: Adverse Childhood Experiences (ACES) ⓘ

##### Learning Topics:

- Types of Maltreatment
- Vulnerable Populations Overview
- Risk Factors
- ACES

Length: 30 minutes

#### Lesson 1b: Vulnerable Populations ⓘ

#### Lesson 2: Role of the Medical Provider ⓘ

#### Lesson 3: Role of the Multidisciplinary Team (MDT)

#### Lesson 4: Growth and Development ⓘ

#### Lesson 5: Normal Anogenital Anatomy ⓘ

#### Lesson 6: Medical History Taking and Documentation ⓘ

### **Please note:**

**To be able to move on to the next lesson, you must have received 80% or higher to be able to access the next lesson.**

**Case study lessons 8, 13, and 19 are tracked via # of slides viewed. Once all slides are viewed, you will be able to progress to the next lesson.**

**This blue arrow appears when a lesson has been successfully completed.**



Click on x to leave lesson and return to the Course Home Page



[Menu](#) | [Resources](#) | [X](#)



Midwest Regional

Lesson 1: Child Maltreatment: An Overview

Medical Training Academy, Lesson 1:

## Child Maltreatment: An Overview

Please note:

Visit the menu in the upper-right hand corner to view your progress in this lesson. You don't need to view the entire lesson in one sitting. Your place will be bookmarked when you exit and re-enter the course. Refer to the syllabus for how long this lesson is expected to take you.



**Midwest Regional**  
CHILDREN'S ADVOCACY CENTER

**Children's**  
MINNESOTA

**OJJDP**

◀ Previous

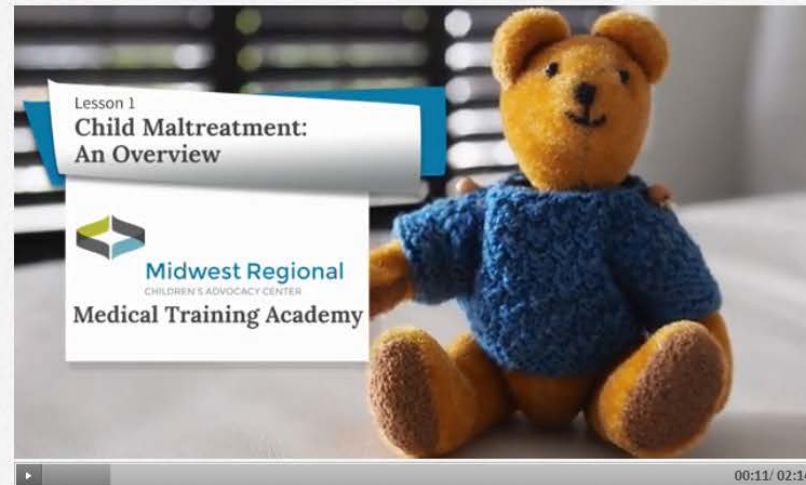
Continue ▶

When the lesson is launched, this is the screen you should see.



Midwest Regional  
CHILDREN'S ADVOCACY CENTER

Lesson 1: Child Maltreatment: An Overview



**This icon will turn on closed captioning for the lesson.**

**Please click only once.**

**You will not have to click it again as you progress through the course,  
Unless you want to turn off closed captioning.**



Lesson 1: Child Maltreatment: An Overview



**This is what closed captioning looks like when turned on.**

**Please note: the Previous and Continue/Quick Reference buttons still work even if the closed captioning is in front of the buttons.**



Experiences (ACES) 

**They will all open in new browser windows.**

**You can move backward or forward here only if the slide has been visited already.**

**Each menu item will turn blue representing that you have visited that slide.**

## LESSON 1: CHILD MALTREATMENT: AN OVERVIEW

Resource Guide 1 & More Info



Midwest Regional  
CHILDREN'S ADVOCACY CENTER



### Types of Child Maltreatment



Child maltreatment includes all types of abuse and neglect of a child under the age of 18 that results in harm, potential for harm, or threat of harm.

The perpetrator may be a parent, a caregiver, or another person in a custodial role, such as clergy, a coach, or a teacher.

There are four types of child maltreatment:

#### Physical Abuse

Physical abuse is nonaccidental physical injury inflicted by a parent or caregiver. It includes punching, kicking, biting, shaking, throwing, stabbing, choking, hitting with hand or object, burning or otherwise harming a child.

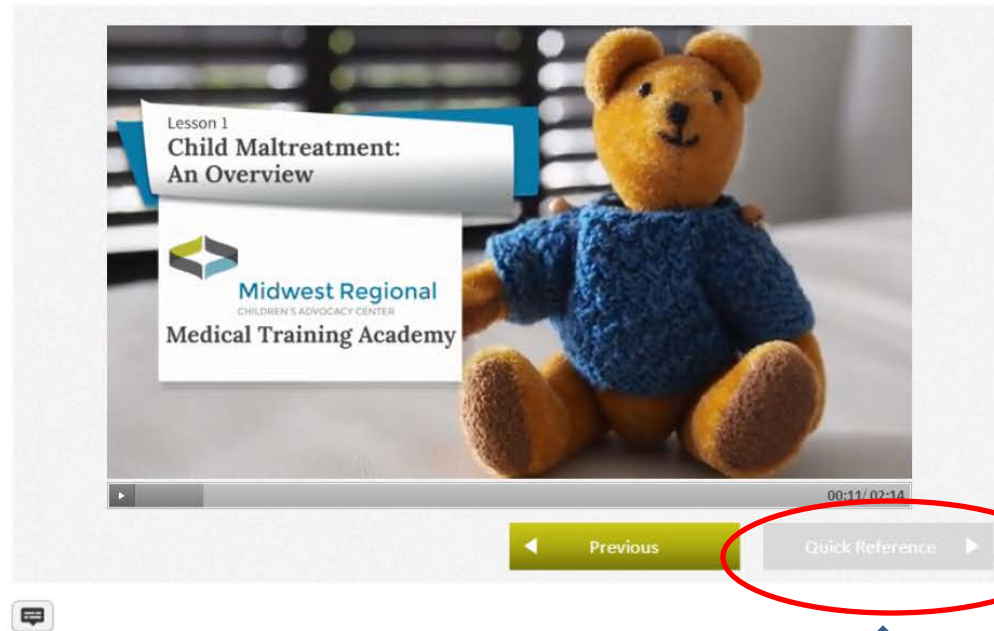


**This is the Knowledge Check Icon.**

**Within the Resource Guide, it will let you know to pay close attention to specific sections that you will be quizzed about later on in the Knowledge Check section of each lesson.**



Lesson 1: Child Maltreatment: An Overview



**Please note:**

**You have to watch the whole video or complete all the steps within a slide before this button turns green to allow you to move to the next slide.**

Student

NAME

Lesson 18: Failure to Thrive (FTT)


Lesson 19: Case Study #3

Lesson 20a: Court Preparation

Lesson 20b: Court Testimony

Lesson 21: Continuing Quality Improvement (CQI)

POST-TEST & EVALUATION



Course Final Evaluation

Following the successful completion of the Course Post-Test, we ask that you complete a course evaluation. Your feedback regarding the course content, tools, learning environment, and learning benefits is extremely helpful to us in maximizing this course and building future programming.

At the end of the evaluation, you will be directed to your Certificate of Attendance which you can retain for professional development/continuing education documentation.

**Once you have completed all lessons, you will have to fill out a post-test and course evaluation to access your certificate of completion.**